

Army National Guard Full-Time Force

ARIZONA

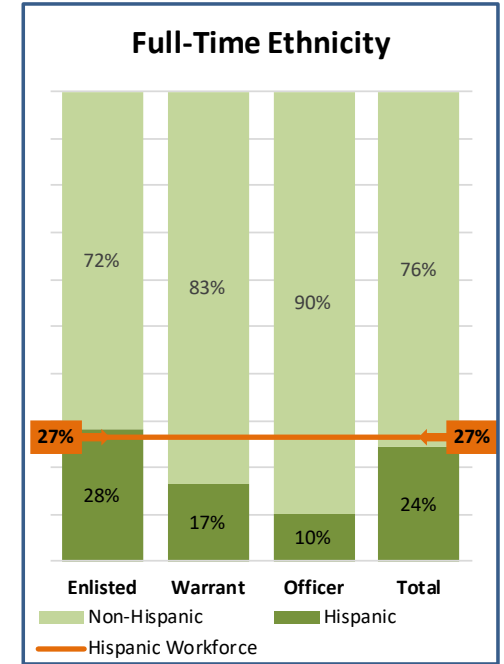
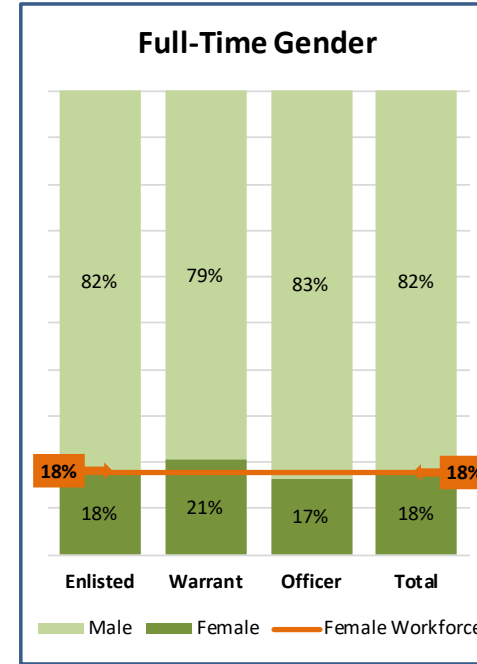
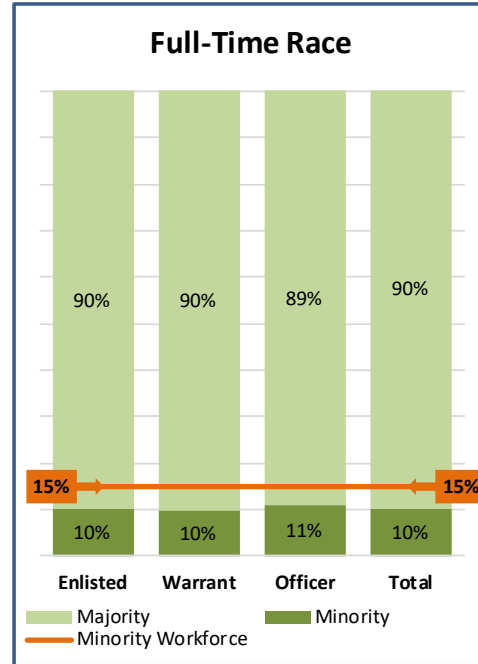
M-Day (Drill Status)					
Race					
	Minority		Majority		Total
Enlisted	633	16%	3,277	84%	3,910
Warrant	15	16%	79	84%	94
Officer	67	15%	374	85%	441
Total	715	16%	3,730	84%	4,445

Gender					
	Female		Male		Total
Enlisted	727	19%	3,183	81%	3,910
Warrant	7	7%	87	93%	94
Officer	50	11%	391	89%	441
Total	784	18%	3,661	82%	4,445

Ethnicity					
	Hispanic		Non-Hispanic		Total
Enlisted	1,142	29%	2,768	71%	3,910
Warrant	9	10%	85	90%	94
Officer	47	11%	394	89%	441
Total	1,198	27%	3,247	73%	4,445

Note: M-Day force excludes Title-32 Technicians

Source: RCMS-G FY21 Q1



	Minority	Majority	Total
Enlisted	67	599	666
Warrant	10	92	102
Officer	14	113	127
Total	91	804	895

	Female	Male	Total
Enlisted	119	547	666
Warrant	21	81	102
Officer	21	106	127
Total	161	734	895

	Hispanic	Non-Hispanic	Total
Enlisted	188	478	666
Warrant	17	85	102
Officer	13	114	127
Total	218	677	895

Note: Full-time force includes AGRs and Title-32 Technicians

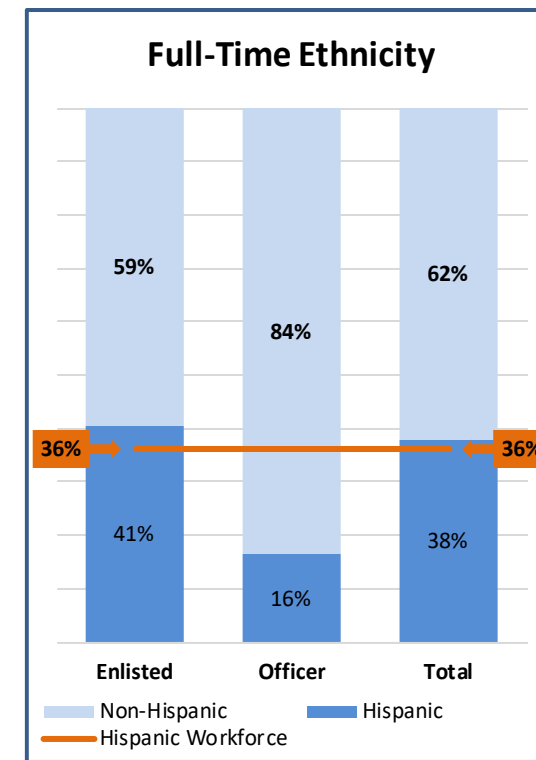
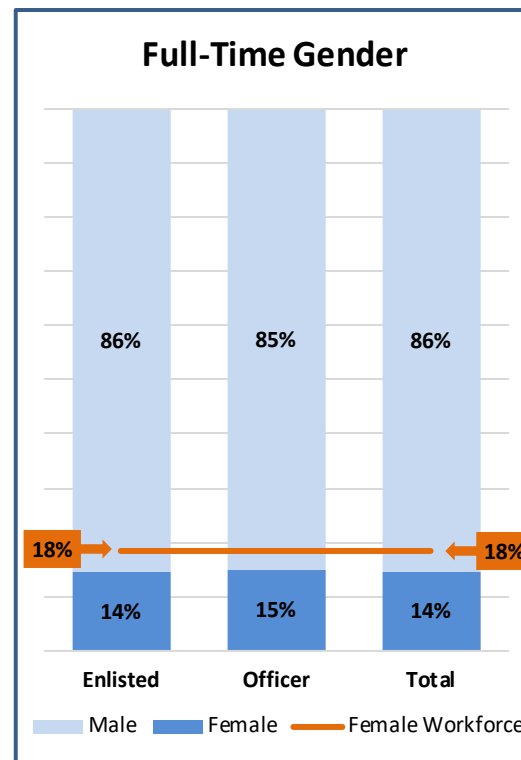
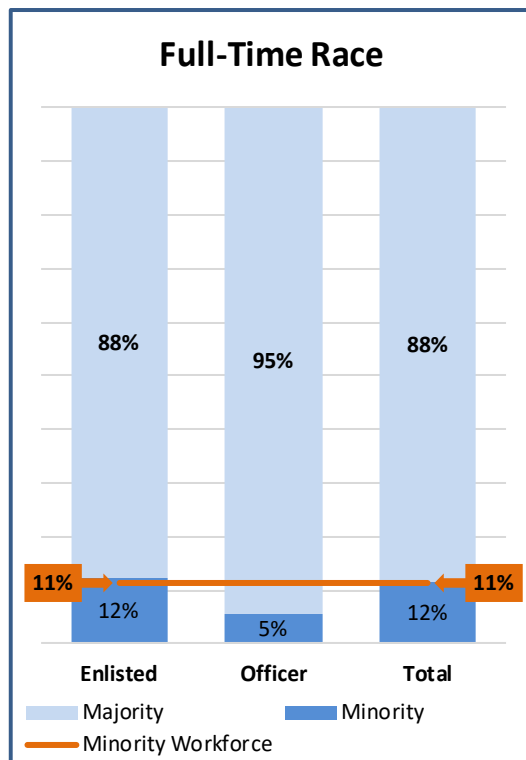
Air National Guard Full-Time Force

ARIZONA

Traditional (Drill Status)					
Race					
	Minority		Majority		Total
Enlisted	119	12%	913	88%	1,032
Officer	24	10%	217	90%	241
Total	143	11%	1,130	89%	1,273

Gender					
	Female		Male		Total
Enlisted	246	24%	786	76%	1,032
Officer	36	15%	205	85%	241
Total	282	22%	991	78%	1,273

Ethnicity					
	Hispanic		Non-Hispanic		Total
Enlisted	412	40%	620	60%	1,032
Officer	24	10%	217	90%	241
Total	436	34%	837	66%	1,273



Note: Traditional force excludes Title 32 Technicians

Source: MILPDS FY21 Q1

	Minority	Majority	Total
Enlisted	147	1,041	1,188
Officer	8	139	147
Total	155	1,180	1,335

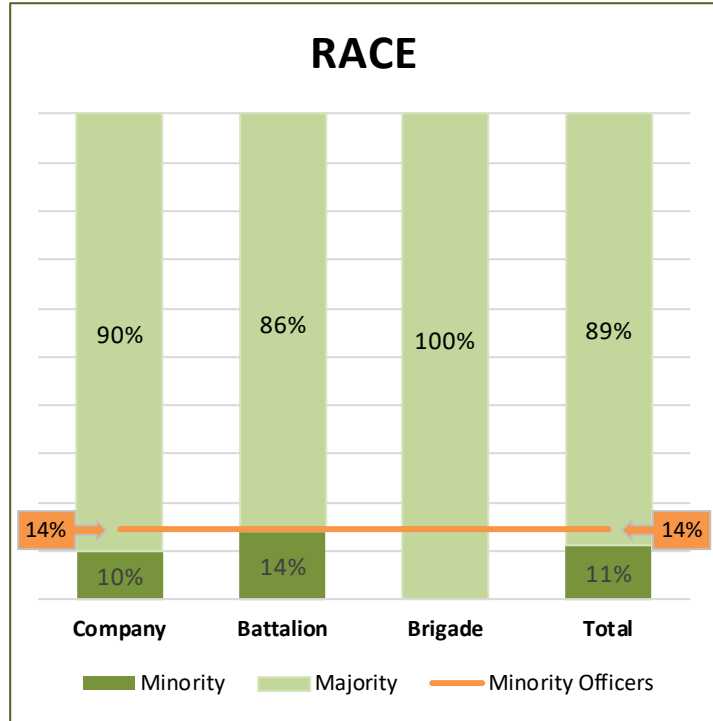
	Female	Male	Total
Enlisted	171	1,017	1,188
Officer	22	125	147
Total	193	1,142	1,335

	Hispanic	Non-Hispanic	Total
Enlisted	483	705	1,188
Officer	24	123	147
Total	507	828	1,335

Note: Full-time force includes AGRs and Technicians

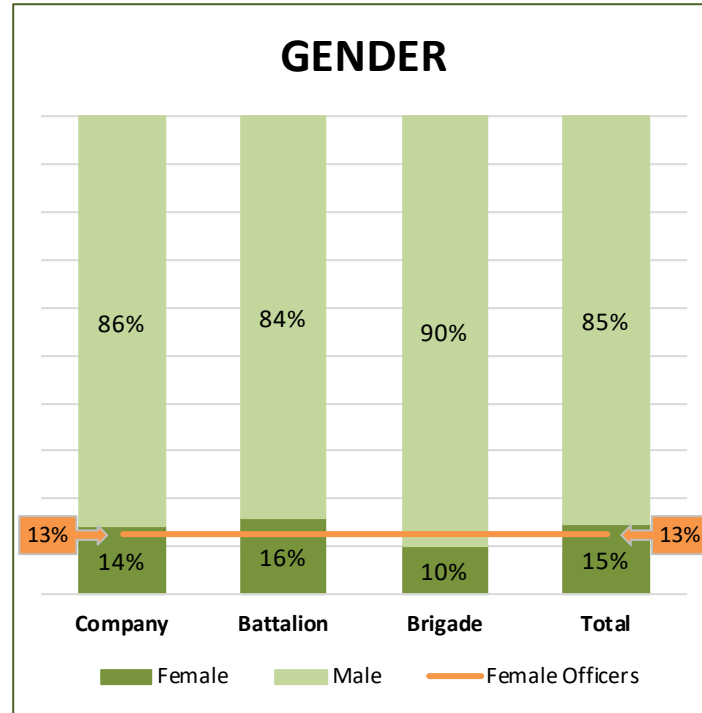
ARNG Commander Pipeline

State: Arizona

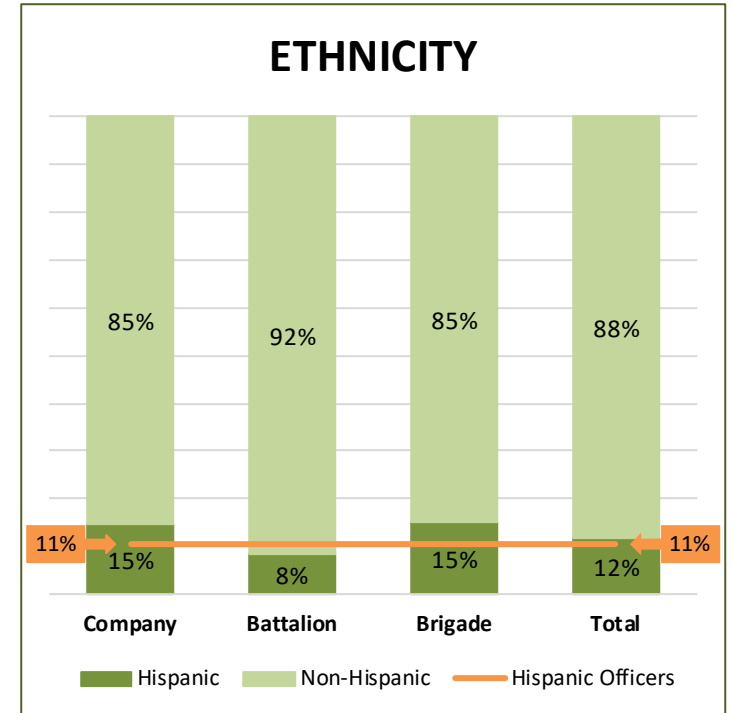


	Company	Battalion	Brigade	Total
Minority	14	20	-	34
Majority	128	123	20	271
Total	142	143	20	305

Note: Minority = Non-White, Majority = White



	Company	Battalion	Brigade	Total
Female	20	23	2	45
Male	122	120	18	260
Total	142	143	20	305

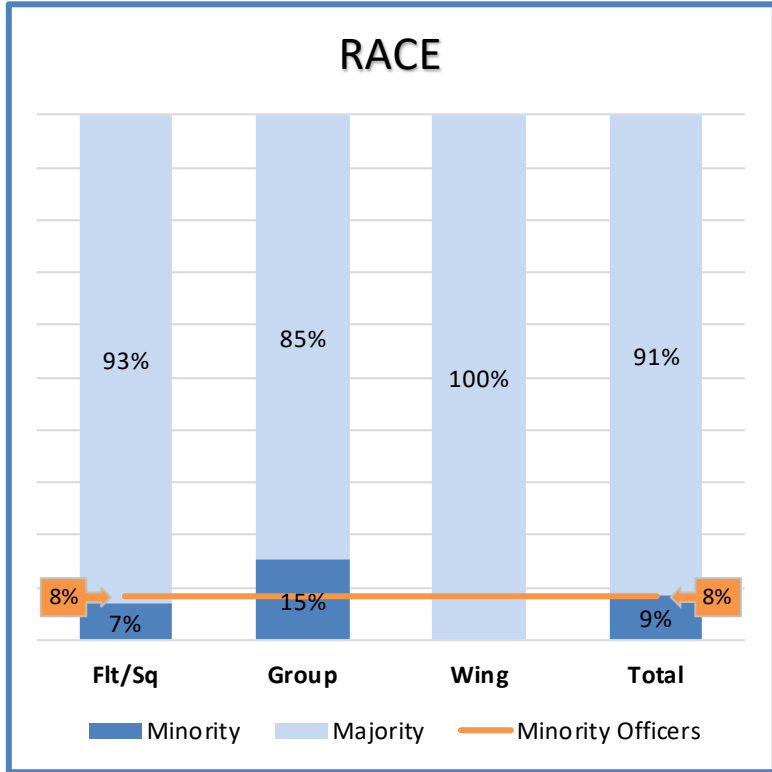


	Company	Battalion	Brigade	Total
Hispanic	21	12	3	36
Non-Hispanic	121	131	17	269
Total	142	143	20	305

Source: RCMS-G FY21 Q1

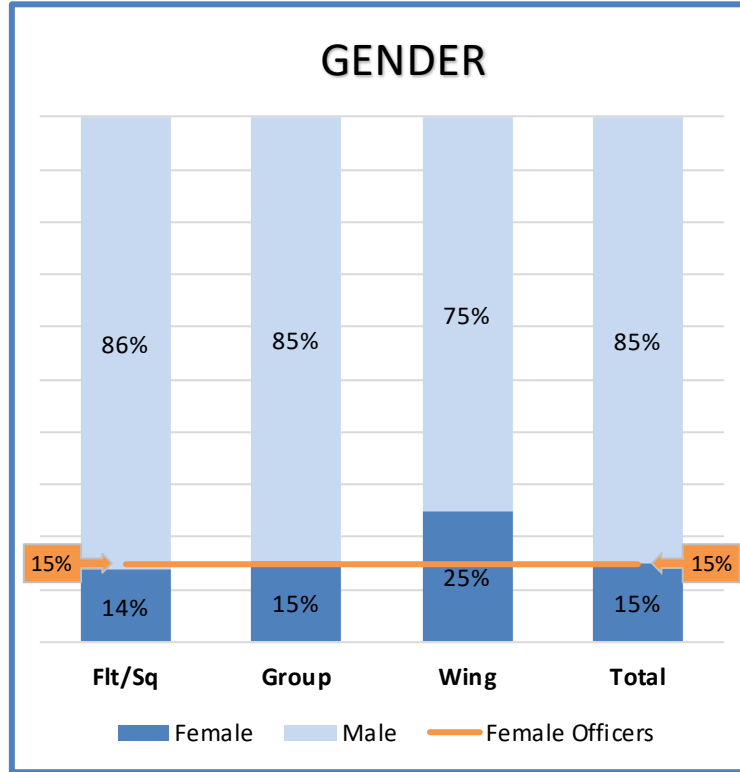
ANG Commander Pipeline

State: Arizona

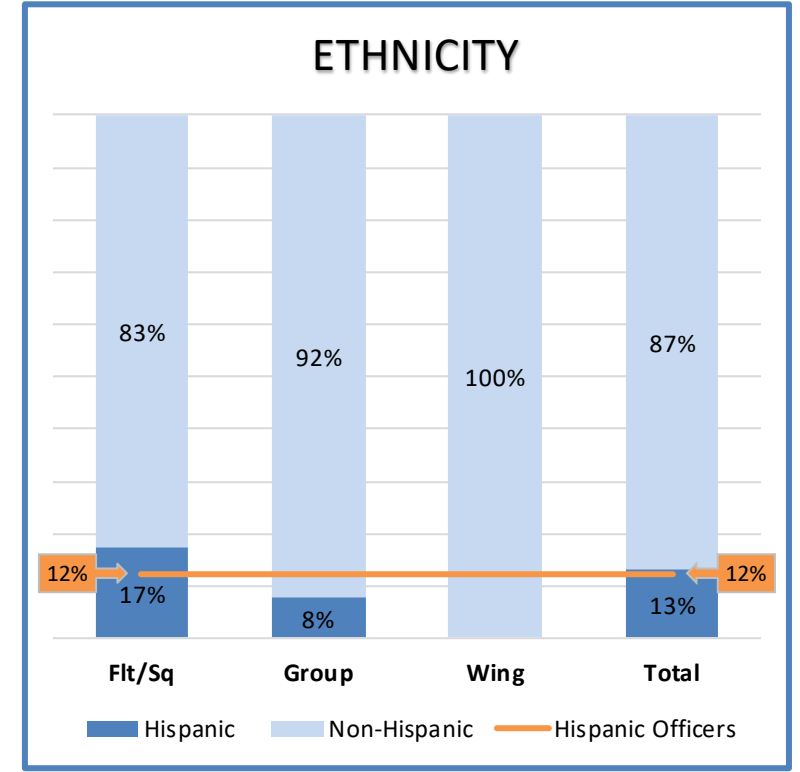


	Ft/Sq	Group	Wing	Total
Minority	2	2	-	4
Majority	27	11	4	42
Total	29	13	4	46

Note: Minority = Non-White, Majority = White



	Ft/Sq	Group	Wing	Total
Female	4	2	1	7
Male	25	11	3	39
Total	29	13	4	46



	Ft/Sq	Group	Wing	Total
Hispanic	5	1	-	6
Non-Hispanic	24	12	4	40
Total	29	13	4	46

Source: MILPDS FY21 Q1